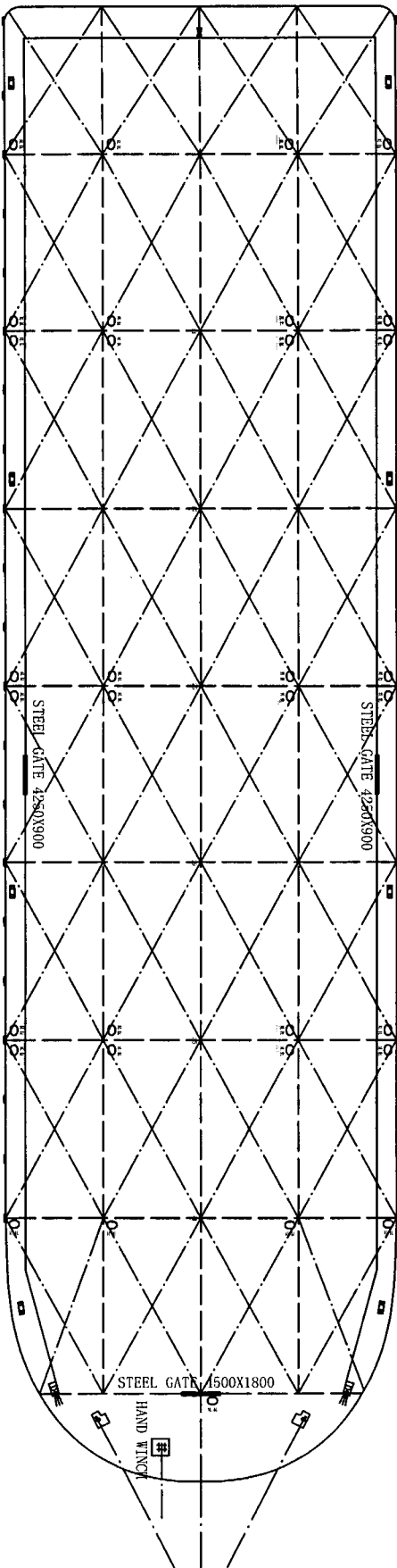


PROFILE



MAIN DECK

300' X 80' X 18' DECK CARGO BARGE

Loa	91.5m
Bmld	24.4m
Dmld	5.5m
FRAME SPACE	1830mm
SIDEBOARD	L82.35mXB21.96mXH3.6m
DECK LOADING	5ton/m ²
CLASSIFICATION	ABS

DECK PL/SIDE PL/BOTTOM PL	12mm
LONG BHD/TRANSYS BHD	8mm
STOCKLESS ANCHOR	1500KG
TOWING BITT	2units
BOLLARD	8units
MANHOLE	33units